

COVID-19 VACCINE

Latest Updates & Resources



April 8, 2021

Gary FEMA sites

The Federal Emergency Management Agency (FEMA) mass vaccination site in Gary Roosevelt Park is officially under way.



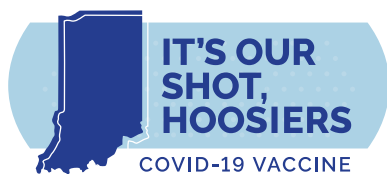
Gov. Eric J. Holcomb was among those on hand to kick off the clinic. As many as 2,000 people will be vaccinated at the drive-through and walk-up site each day for the next eight weeks.

The site is also supported by two mobile sites. The Pentecostal Temple Church, 2722 Wabash St. in Michigan City will be open from 9 a.m. to 6 p.m. April 7-10. The second mobile unit will be at the Merrillville Parks and Recreation Department, 6600 Broadway, from 9 a.m. to 6 p.m. April 7-9.

Appointments are encouraged for all three sites and are still available. Visit [OurShot.IN.gov](https://ourshot.in.gov), click to register and search by the ZIP code 46407, 46360 or 46410.



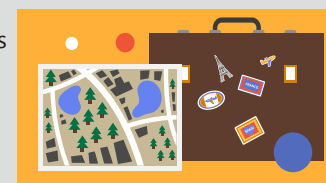
Click on the play button above to watch [Vaccine Voices, short stories from around Indiana.](#)



To date, **1,321,876** Hoosiers have been fully vaccinated!

Updated guidance for fully vaccinated people

The Centers for Disease Control and Prevention recently updated its guidance for people who are fully vaccinated. A person is considered fully vaccinated two weeks after receiving the last recommended dose of vaccine. This is two weeks after the second dose of Pfizer and Moderna, and two weeks after a single dose of the Johnson & Johnson (Janssen) vaccine.



Highlights of the new guidance include eliminating the need for COVID-19 testing before and after travel, as well as eliminating the need for post-travel self-quarantine. [Read the complete updated travel guidance here.](#)

Stay informed and take action:

College students, young adults, and variants of SARS-CoV-2

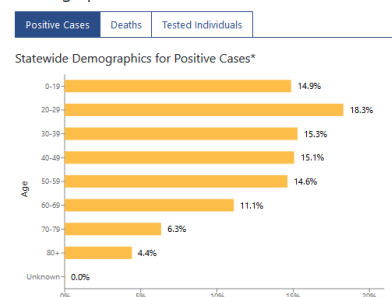
Cases of COVID-19 are increasing in Indiana among younger adults.

Increases are due in part to the [variants of SARS-CoV-2](#) and their higher rates of transmissibility.

The Indiana Department of Health is partnering with colleges and universities statewide to set up vaccination clinics with the goal of getting students vaccinated before they leave school at the end of the semester.

Young adults not in college can find a vaccination site in any one of the 92 counties around the state at [OurShot.IN.gov](https://ourshot.in.gov). The vaccine is now available for anyone 18 years of age and older [Moderna and Johnson & Johnson (Janssen)] or 16 years of age and older (Pfizer.) Specific vaccine information is listed by clinic at [OurShot.IN.gov](https://ourshot.in.gov).

Demographic Distributions



Hoosiers age 20-29 currently have the highest percentage of positive cases for COVID-19

Helpful Resources

- Proof of vaccination is available at [Access Indiana](#). Scroll down to the "Indiana Vaccination Portal" tile, create an account, and download a vaccination certificate.
- Register for a vaccination appointment and stay up to date at [OurShot.IN.gov](https://ourshot.in.gov) (Chrome or Firefox). Call Indiana 211 or 1-866-211-9966 if you have difficulty registering online.
- Ask a question on our [FAQ page](#). It's updated daily.
- [Learn about V-Safe](#), the after-vaccination health checker, and the new [V-safe COVID-19 Pregnancy Registry](#). V-safe is also available now in [multiple languages](#).
- [Indiana Area Agencies on Aging](#) and AARP offices are assisting seniors make their vaccine appointments.
- Report any adverse effects from any vaccine to the [Vaccine Adverse Effect Reporting System \(VAERS\)](#).

COVID-19 VACCINE

Snapshot

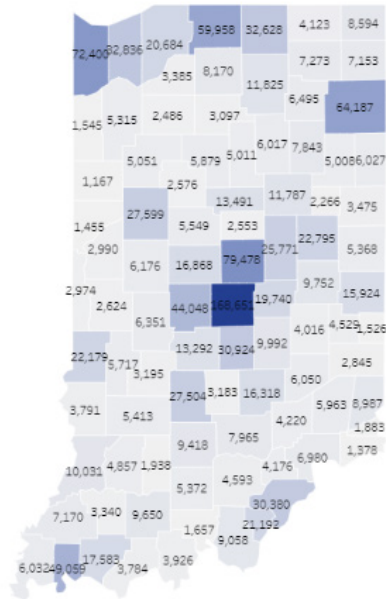


Indiana Department of Health

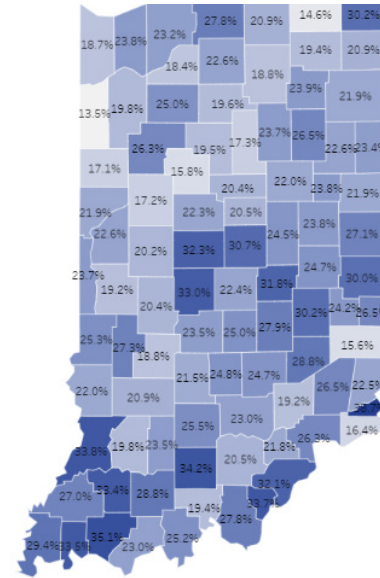


Total Individuals Fully Vaccinated*

1,321,876



Fully Vaccinated as a Percentage of County Population 16+



*Individuals are fully vaccinated after their 2nd dose of Pfizer or Moderna vaccine, OR after a single dose of Johnson & Johnson vaccine.

Here are the latest percentages of people who received a vaccine by age group. These percentages include residents and staff in long-term care facilities.

- 72% of 80+
- 73% of 75-79
- 75% of 70-74
- 67% of 65-69
- 55% of 60-64
- 41% of 55-59
- 36% of 50-54
- 28% of 45-49
- 25% of 40-44
- 18% of 35-39
- 16% of 30-34
- 12% of 25-29
- 12% of 20-24
- 5% of 16-19

The Indiana Department of Health is partnering with businesses around the state to vaccinate their employees. Many have already started their clinics. Email questions to Business_IndustryVax@isdh.in.gov. The participating organizations include:

- Corteva Agriscience
- Cummins
- Eli Lilly
- Subaru
- Midwest Operating Engineers
- Roche Diagnostics
- Stellantis (Fiat Chrysler)
- FarBest Foods, Inc.
- Tyson Foods
- Indiana Packers Corporation
- The Heritage Group
- Cook Medical Group
- Allison Transmission
- Sweetwater Sound - Medical Center

Fifteen higher education campuses in Indiana are actively vaccinating, and eight more are set to start in the next few weeks.

- Vaccine Types Available
- Moderna
 - Pfizer
 - Johnson & Johnson
 - Multiple Vaccine Types
 - Federal Retail

The map found on OurShot.In.Gov is now color-coded by which type of vaccine each site uses. People scheduling appointments can see which type they are getting in advance of their appointment on the map as well as on the state registration website. Clinics are labeled "PVAX," "MVAX" or "JVAX" with the first letter indicating which brand the site administers (P = Pfizer, M = Moderna, J = Johnson & Johnson).